

Cave Art

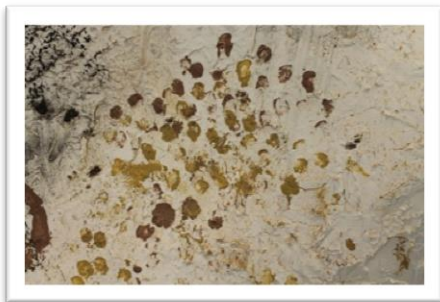
During the second half of the school year 2013-2014 all students of Wolfville School were involved in a major project: "Cave Art". It was designed and led by parent volunteer Elisabeth Knein, MA Cultural Anthropology and Archaeology, to introduce students to the history of mankind.

All Grades were given a presentation with explanatory pictures, charts and artifacts to allow an insight into the prehistoric development and cultural accomplishments of the human race. The main focus was the last phase of the Upper Paleolithic during the outgoing Glacial Age in Europe (dating from 50,000 until 10,000 BC) with detailed information about the special artistic expression of that time period: Cave Art.

An exhibition was installed to further illustrate the unique art produced more than ten thousand years ago. It helped students to appreciate the accomplishments of that time and encouraged them to create their own individual pieces of cave art on a modelled plaster wall, resembling a wall of a cave. This wall was constructed by four volunteers with the help of students of the upper Grades over the course of several weeks.

The students' artwork, created with the materials and techniques identical to the ones used by our ancestors, became part of the exhibition. The painted wall showcases how students appreciated this unusual learning experience and highlights their own ideas and talent.

Primary Art



Grades 1 & 2 Art



Grades 2 & 3 Art



Grades 4 & 5 Art



Grades 6, 7 & 8 Art



The Cave

